

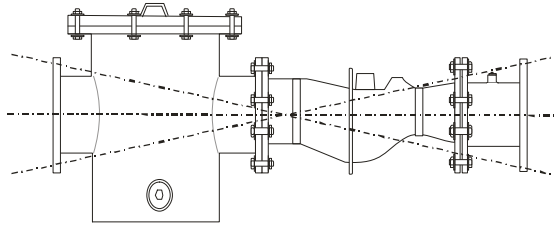
## Meter Installation Instructions

### Installation Preparation



1. Meter assembly is intended for measuring potable, cold water in one direction only. Meter is suitable for both fire deluge and dual domestic/fire service.
2. Meter assembly must be installed in a horizontal pipeline with the register facing upward and readily accessible for reading. To meet accuracy specifications, the meter assembly should not be mounted at more than a 10% angle (either slanted along the pipe or tilted to the side).
3. In most applications, no straight pipe length, upstream or downstream is necessary.
4. Under normal usage conditions the Enduro meter within the assembly is not affected by sand or suspended particles. The fire service strainer is for large debris which could impede fire deluge flow. The fire service strainer has a 2" clean-out port for removing debris.
5. The assembly comes with a spacer/spool to provide a common lay length and to provide a test port.
6. The fire service strainer comes with an eyelet for lifting during the installation.

Meter must be within  
+/- 10% of horizontal  
(tilt and slant) to  
achieve specified  
accuracy.



### Installation Procedures

1. Suitable shut-off valves should be installed adjacent to both the inlet and outlet of the meter so service may be shut off without inconvenience to the customer whenever the meter must be removed.
2. Clean and flush the service line thoroughly on the inlet side of the meter before installing the meter.
3. To insure unrestricted flow of water through the meter, use the proper size and type of gaskets. Connections should only be sufficiently tightened to seal; do not over-tighten.
4. When tightening the bolts/nuts, use a staggered pattern similar to tightening lug nuts on a automobile tire to avoid over-stressing the flanges seals.
5. After the meter is installed, shut the outlet shut-off valve. Open the inlet shut-off valve slowly until the meter is full of water and there are no leaks.
6. Open the outlet valve slowly until air is out of the meter and service line. Open a valve downstream of the meter slowly and insure that no foreign debris in the water obstructs the operation of the meter.

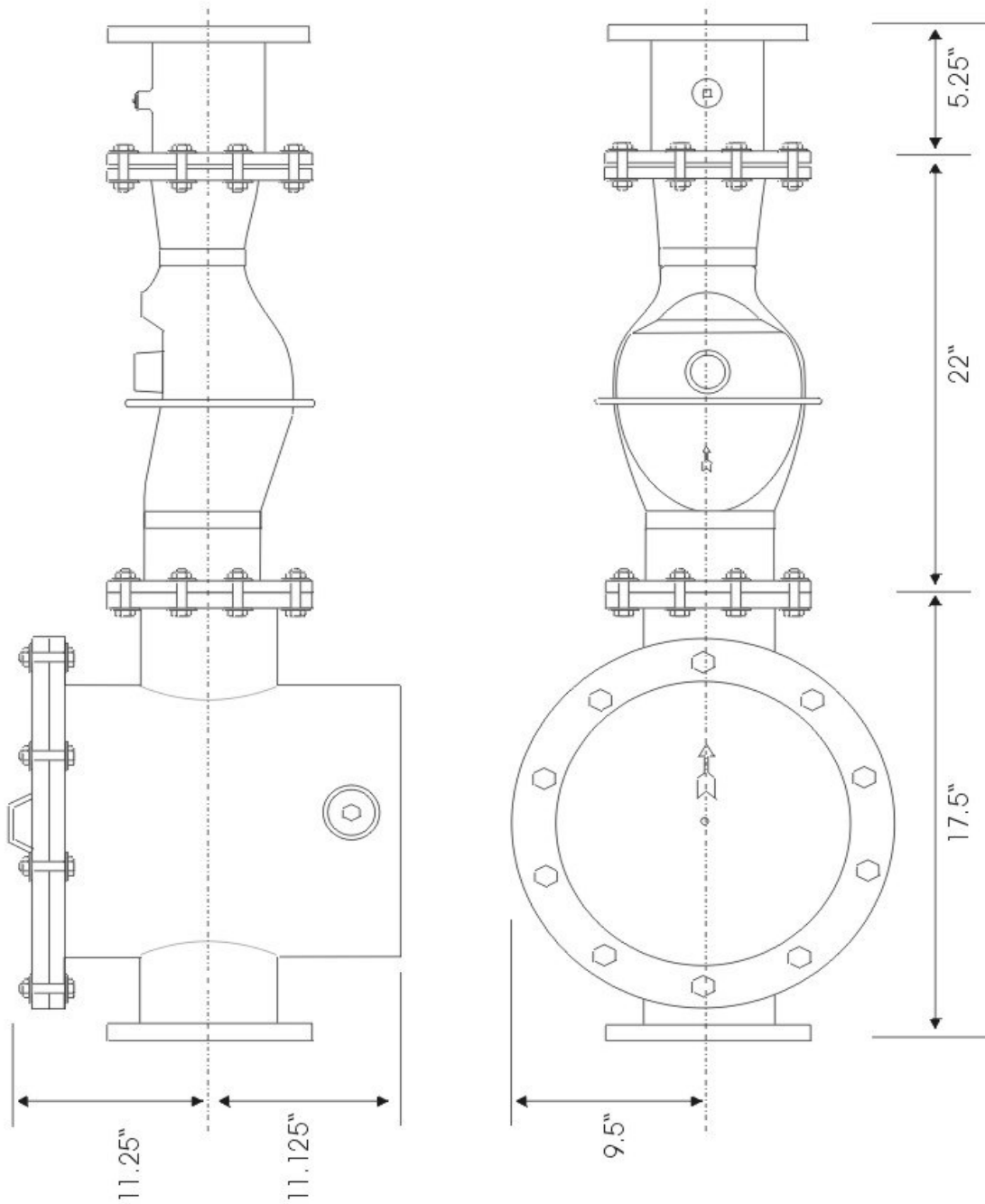
**CAUTION:** Introducing water too quickly into the meter will damage the meter's internal components.  
The meter and service line must be free of air before operating the meter at normal flow rates

**NOTE:** Install an electrical grounding strap around the meter for maintenance safety while repairing or removing meter.

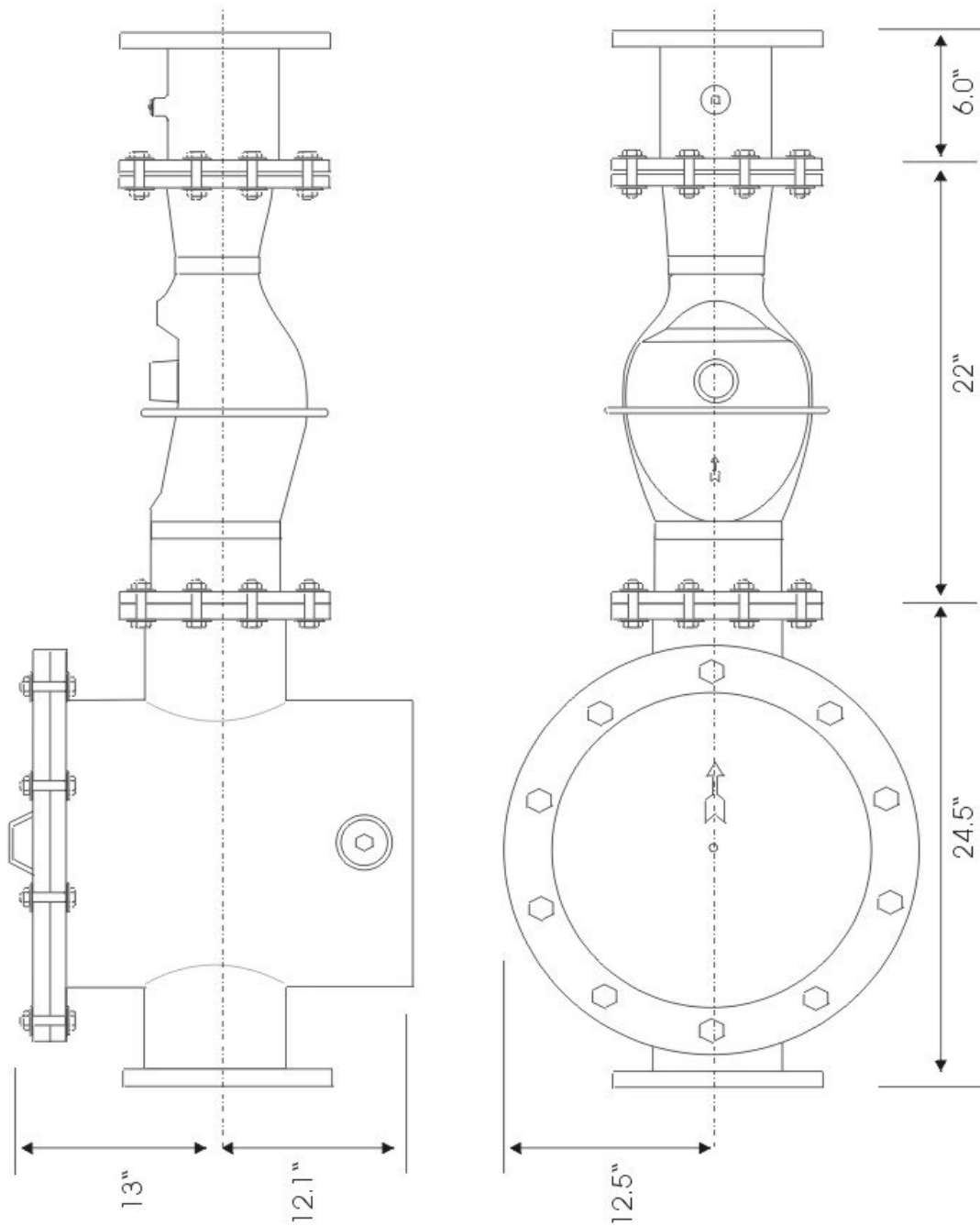
**NOTE:** Consult the American Water Works Association (AWWA) Manual M6 for additional details on water meter installations. Also, due to the complexity and risk of installing a large meter assembly, only professional, experienced personnel should install the meter.

**NOTE:** Consult the AMES Fire Service Strainer documentation for additional information.

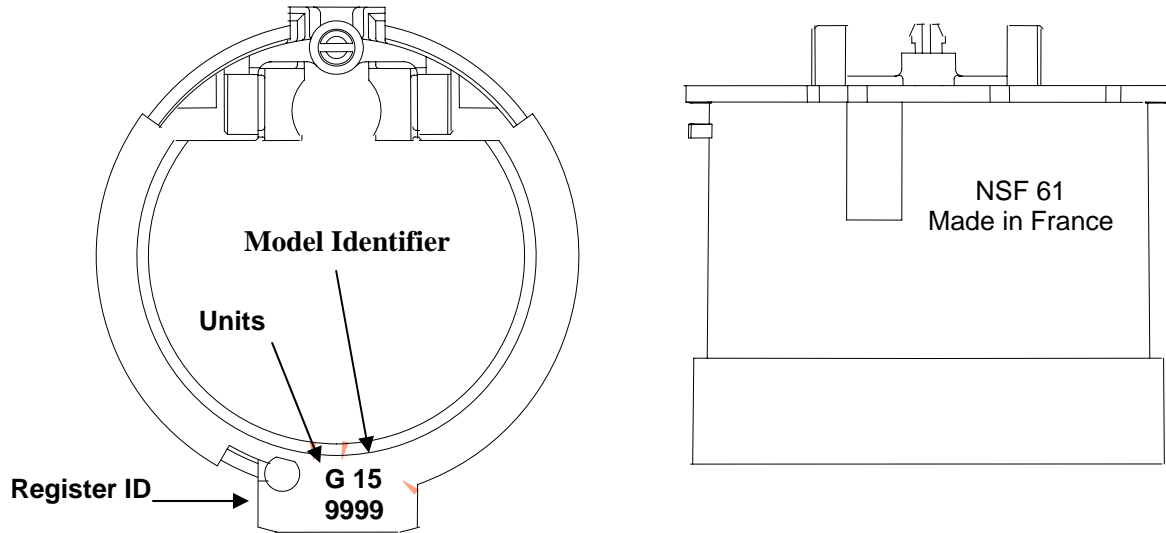
**6-inch Fire Service Meter Physical Specifications**



**8-inch Fire Service Meter Physical Specifications**



**Register Labeling & Identification**



Model	Identifier
Enduro 1100	27
Enduro 2000	31
Enduro 2400	21
Enduro 2800	23

NOTE: Older registers may have different labeling scheme. Check with Metron Customer Service for reference documentation

**Meter Labeling & Identification**

The Enduro water meter in the Fire Service Meter Assembly will be marked with an FM tag as shown below:

