

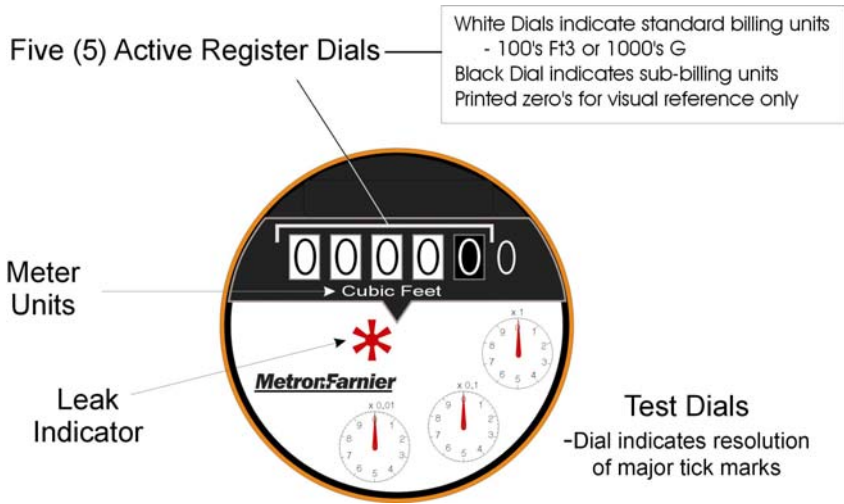
**TECHNICAL
APPLICATION
NOTE**



**Optical
Encoded
Register**

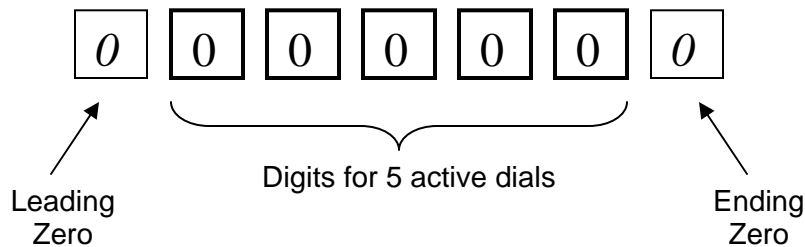
**Encoder
Configuration
Application
Sheets**

Metron-Farnier's OER is a 5-dial encoder. The register face shows the active dials as well as dummy zeros to indicate standard billing units.



The OER is configurable: The encoder can be programmed at the factory for 4, 5 or 6 digit output. Thus, the OER can be adapted to the standard meter data format of a utility. The attached sheets should be used when ordering new meters with the OER register to ensure proper data format.

The user must be aware that to configure a 6-digit output, a dummy zero is added to beginning of the read (Leading Zero) OR the end of the read (Ending Zero). This zero is a placeholder only.



Encoder Configuration

Ft3

Residential Spectrum Meters
Spectrum 22



100,000's Ft3
10,000's Ft3
1,000's Ft3
100's Ft3
10's Ft3

Active Dials

1 1 3 8 2

5-Dial Encoder

Default Configuration

100,000's Ft3
10,000's Ft3
1,000's Ft3
100's Ft3
10's Ft3
1's Ft3

1 1 3 8 2 0

6-Dial Output, Ending Zero
Value in 1's Ft3

Optional

1,000,000's Ft3
100,000's Ft3
10,000's Ft3
1,000's Ft3
100's Ft3
10's Ft3

0 1 1 3 8 2

6-Dial Output, Leading Zero
Value in 10's Ft3

Optional

100,000's Ft3
10,000's Ft3
1,000's Ft3
100's Ft3
10's Ft3

1 1 3 8 2

5-Digit Output
Value in 10's Ft3

Optional

100,000's Ft3
10,000's Ft3
1,000's Ft3
100's Ft3

1 1 3 8

4-Digit Output
Value in 100's Ft3

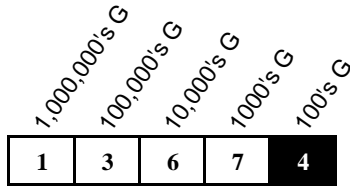
Encoder Configuration

USG

Residential Spectrum Meters
Spectrum 22

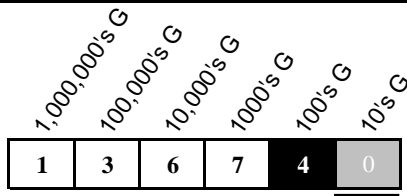


Active Dials



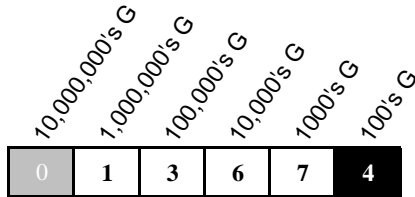
5-Dial Encoder

Default Configuration



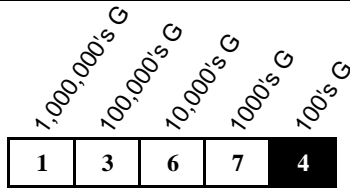
6-Dial Output, Ending Zero
Value in 10's USG

Optional



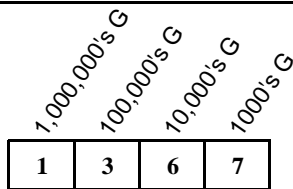
6-Dial Output, Leading Zero
Value in 100's USG

Optional



5-Digit Output
Value in 100's USG

Optional



4-Digit Output
Value in 1000's USG

Encoder Configuration

Ft3

Commercial Spectrum Meters

Spectrum 50

Spectrum 88

Spectrum 130

Spectrum 175

Spectrum 260

Spectrum 440



1,000,000's Ft3
100,000's Ft3
10,000's Ft3
1,000's Ft3
100's Ft3

Active Dials

1	2	6	2	3
---	---	---	---	---

5-Dial Encoder

Default Configuration

1	2	6	2	3	0
---	---	---	---	---	---

6-Dial Output, Ending Zero

Value in 10's Ft3

Optional

0	1	2	6	2	3
---	---	---	---	---	---

6-Dial Output, Leading Zero

Value in 100's Ft3

Optional

1	2	6	2	3
---	---	---	---	---

5-Digit Output

Value in 100's Ft3

Optional

1	2	6	2
---	---	---	---

4-Digit Output

Value in 1,000's Ft3

Encoder Configuration

USG

Commercial Spectrum Meters

- Spectrum 50*
- Spectrum 88*
- Spectrum 130*
- Spectrum 175*
- Spectrum 260*
- Spectrum 440*



Active Dials	<div style="text-align: center;"> <p>10,000,000's G 1,000,000's G 100,000's G 10,000's G 1000's G</p> <p>1 3 7 2 9</p> </div>	5-Dial Encoder
Default Configuration	<div style="text-align: center;"> <p>10,000,000's G 1,000,000's G 100,000's G 10,000's G 1000's G 100's G</p> <p>1 3 7 2 9 0</p> </div>	6-Dial Output, Ending Zero Value in 100's USG
Optional	<div style="text-align: center;"> <p>100,000,000's G 10,000,000's G 1,000,000's G 100,000's G 10,000's G 1000's G</p> <p>0 1 3 7 2 9</p> </div>	6-Dial Output, Leading Zero Value in 1,000's USG
Optional	<div style="text-align: center;"> <p>10,000,000's G 1,000,000's G 100,000's G 10,000's G 1000's G</p> <p>1 3 7 2 9</p> </div>	5-Digit Output Value in 1,000's USG
Optional	<div style="text-align: center;"> <p>10,000,000's G 1,000,000's G 100,000's G 10,000's G</p> <p>1 3 7 2</p> </div>	4-Digit Output Value in 10,000's USG

Encoder Configuration

USG

Enduro Meters

Enduro 1100

Enduro 2000

Enduro 2400

Enduro 2800



100,000,000's G
10,000,000's G
1,000,000's G
100,000's G
10,000's G

Active Dials

5	0	6	3	8
---	---	---	---	---

5-Dial Encoder

Default Configuration

100,000,000's G
10,000,000's G
1,000,000's G
100,000's G
10,000's G
1000's G

5	0	6	3	8	0
---	---	---	---	---	---

6-Dial Output, Ending Zero

Value in 1000's USG

Optional

1,000,000,000's G
100,000,000's G
10,000,000's G
1,000,000's G
100,000's G
10,000's G

0	5	0	6	3	8
---	---	---	---	---	---

6-Dial Output, Leading Zero

Value in 10,000's USG

Optional

100,000,000's G
10,000,000's G
1,000,000's G
100,000's G
10,000's G

5	0	6	3	8
---	---	---	---	---

5-Digit Output

Value in 10,000's USG

Optional

100,000,000's G
10,000,000's G
1,000,000's G
100,000's G

5	0	6	3
---	---	---	---

4-Digit Output

Value in 100,000's USG